

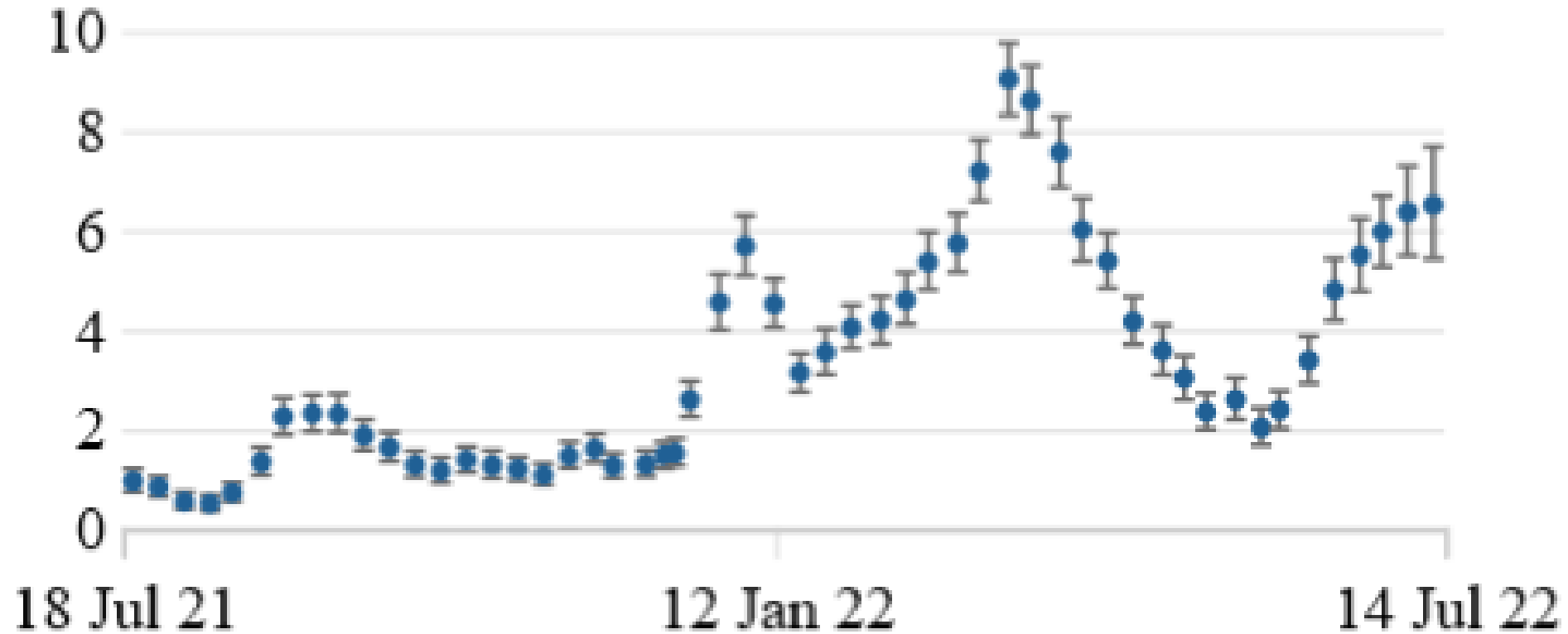
# **COVID-19 UPDATE**

**26 July 2022**

Tim Allison, Director of Public Health

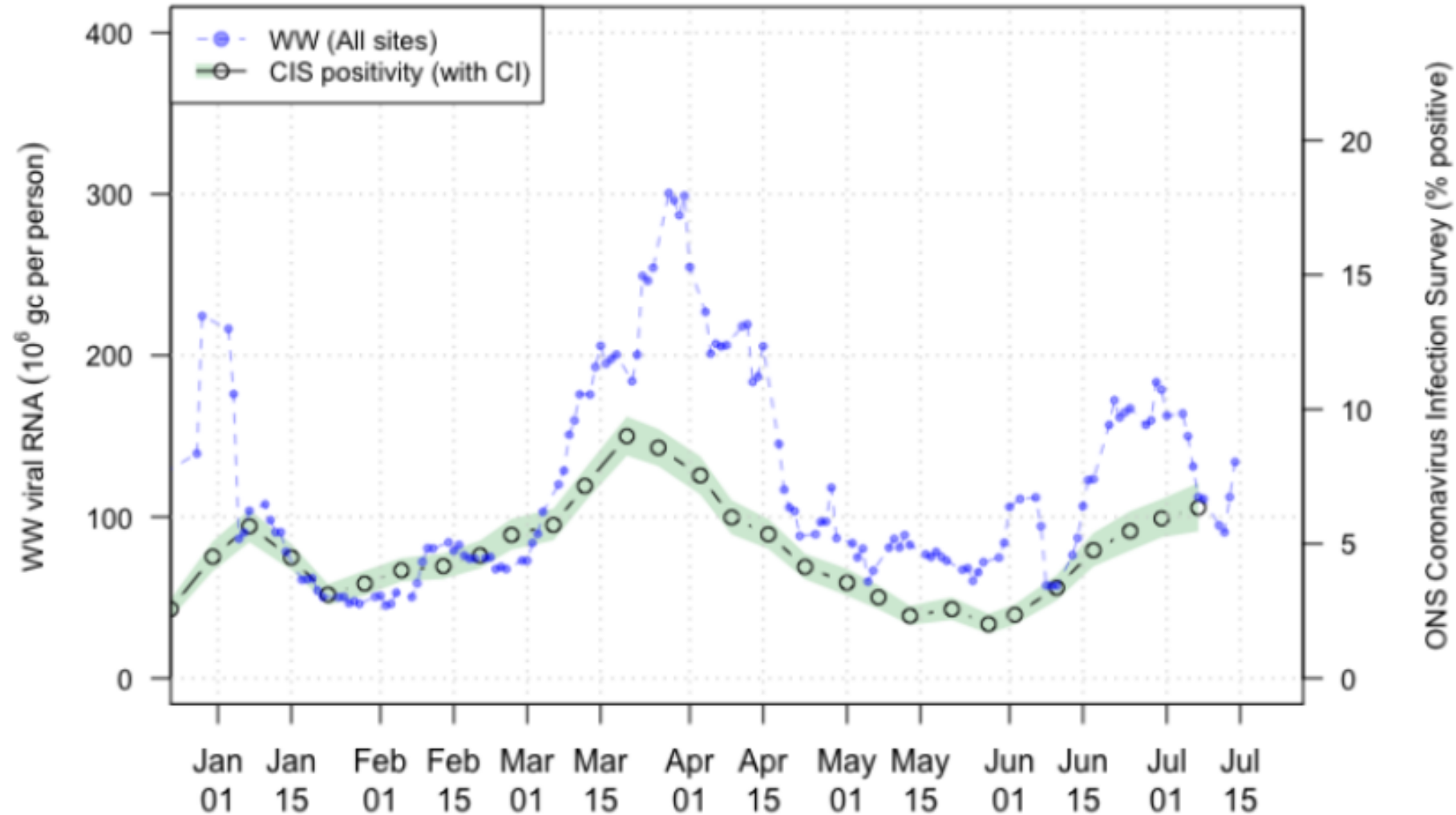
A decorative graphic at the bottom of the slide consisting of two overlapping, light blue, wavy shapes that resemble stylized waves or hills.

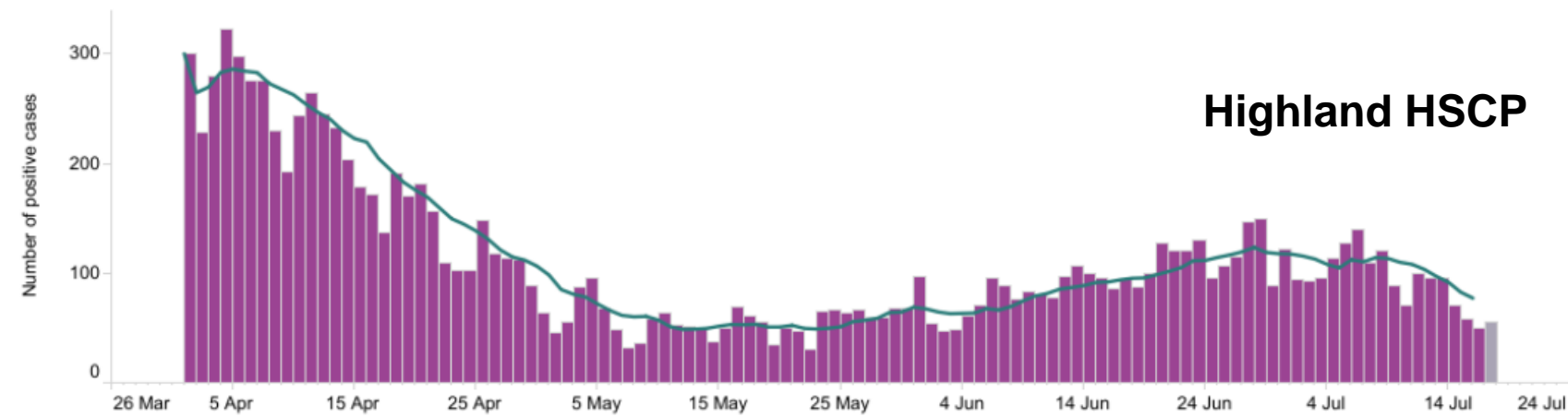
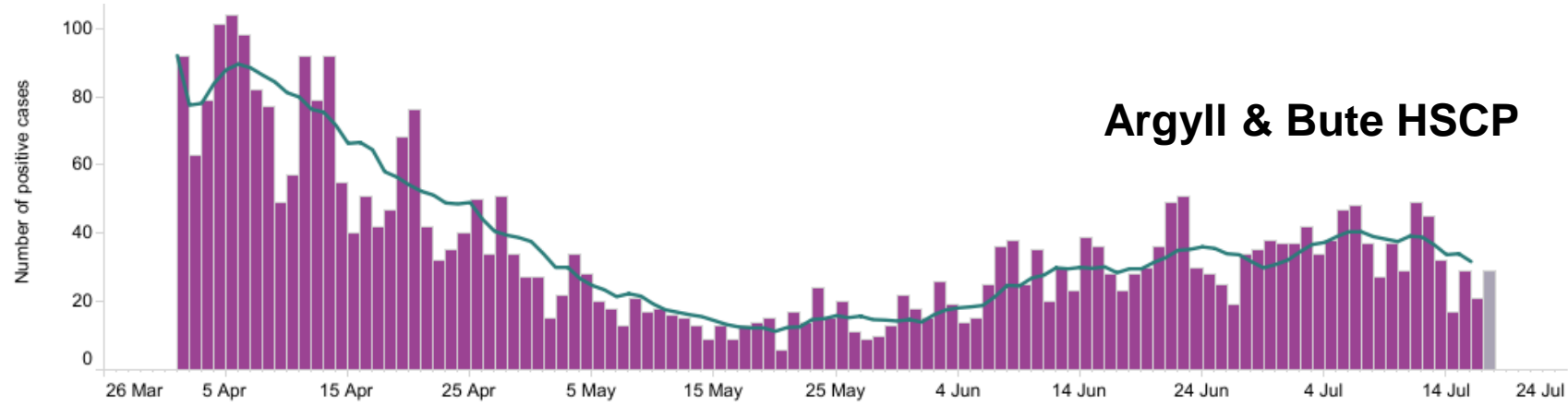
# ONS Estimate of Percentage of People Infected with COVID in Scotland



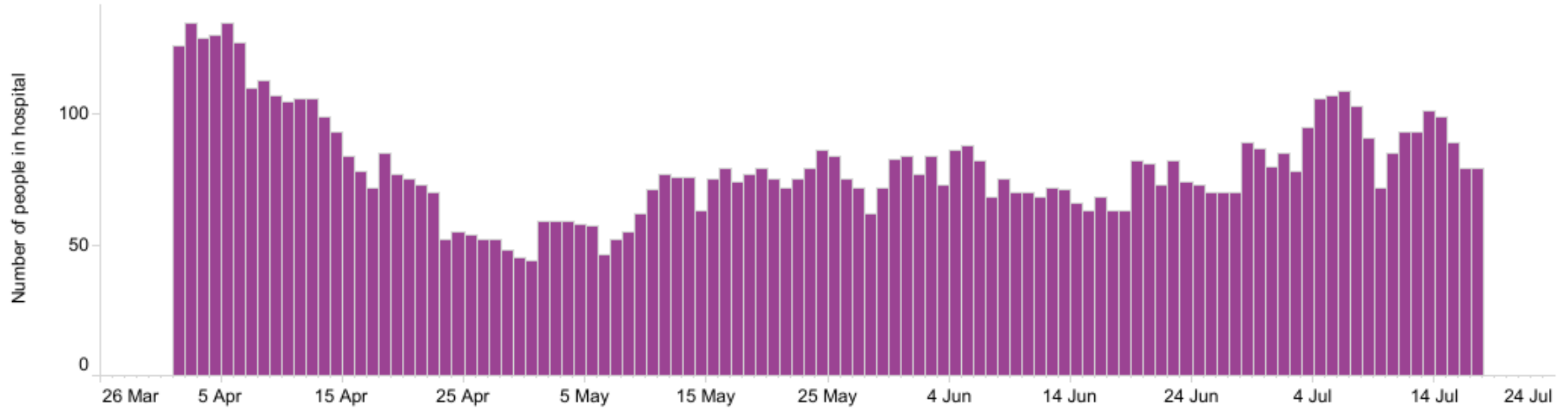
Source: Office for National Statistics, Coronavirus (COVID-19) Infection Survey (CIS), 22 July 2022

# National running average trends in wastewater COVID-19





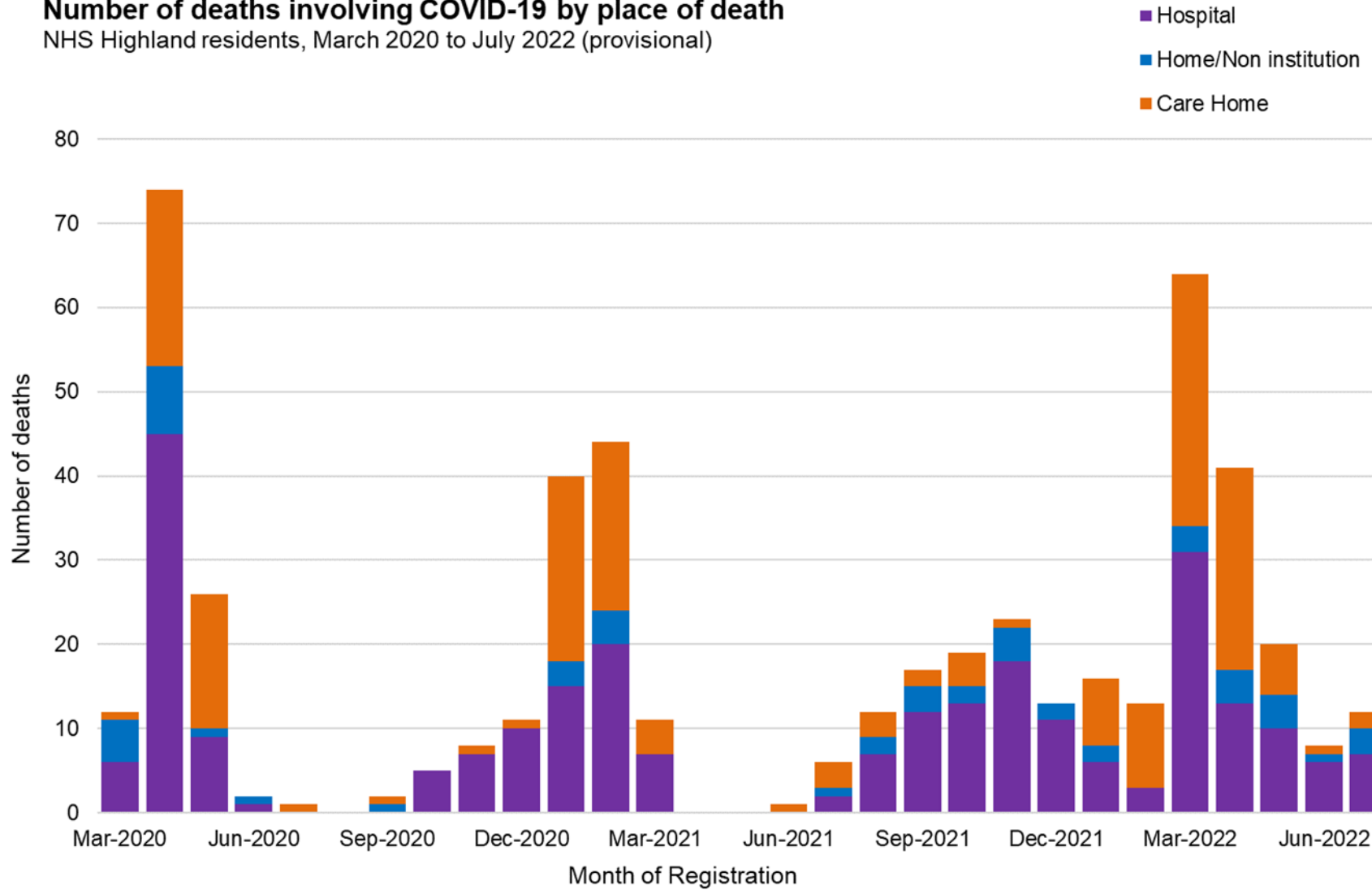
# Hospital Occupancy with COVID Diagnosis: NHS Highland



Source: Public Health Scotland COVID-19 Daily Dashboard | Tableau Public

## Number of deaths involving COVID-19 by place of death

NHS Highland residents, March 2020 to July 2022 (provisional)



Source: National Records of Scotland, provisional data to week 28 (15 Jul 2022). COVID-19 mentioned in any position on the death certificate.

# COVID Issues

Continuing infections in the absence of widespread testing

Balance of control measures with risks of harm

Potential for further waves of infection

Potential for new variants

Long COVID

Vaccination

Social Mitigation

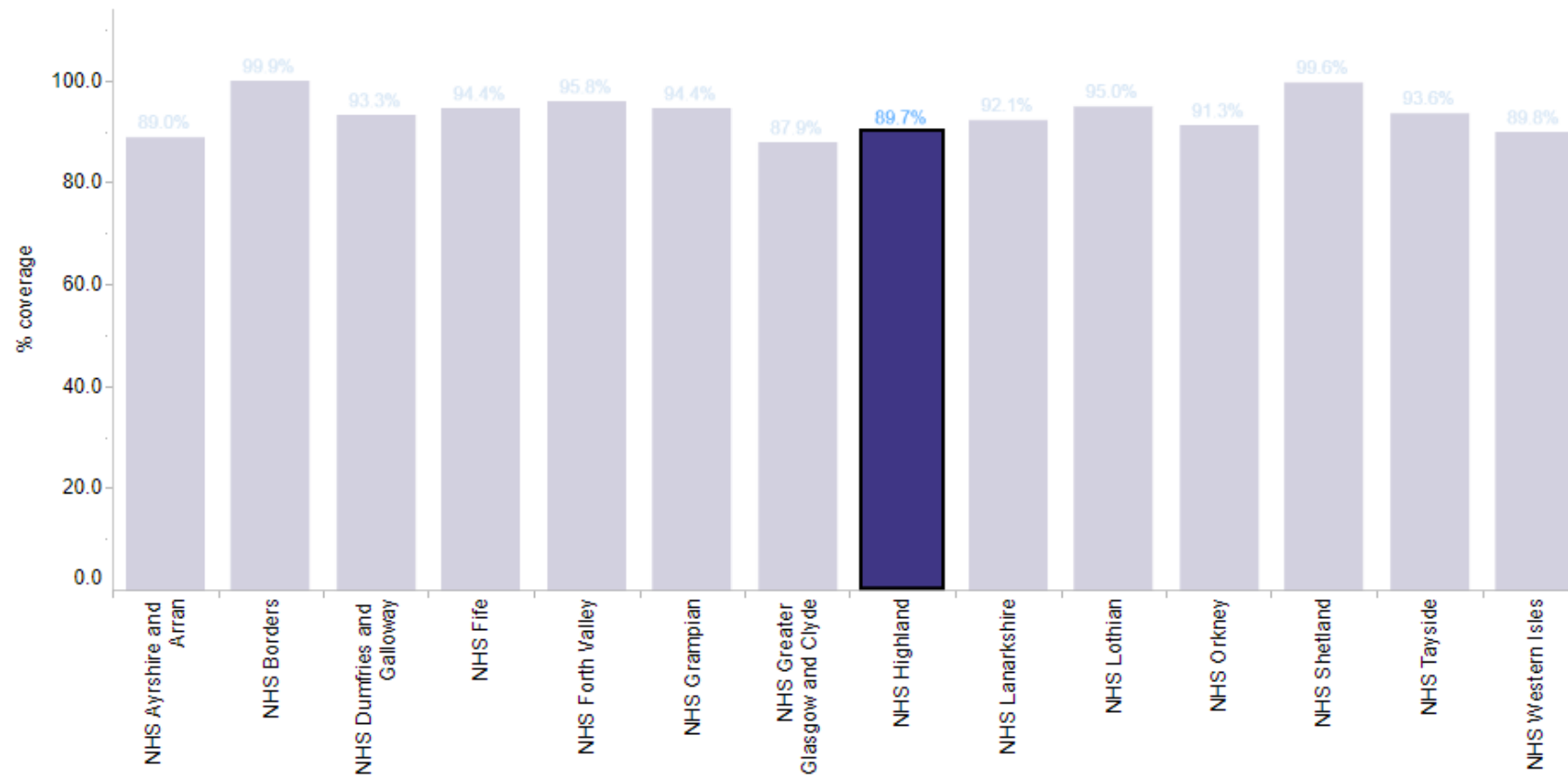
A large, light blue decorative graphic at the bottom of the slide, consisting of several overlapping, curved shapes that resemble waves or stylized hills.

# COVID-19 vaccinations

## Dose 4 percentage coverage of eligible population aged 75+ years

**JCVI advises a spring booster dose for adults aged 75 years and over, residents in care homes for older adults and individuals aged 12 years and over with weakened immune systems**

Dose 4 (75+ only) % coverage in people aged 75+ years by dose and by NHS Board





# Questions

